





PA 
PAOTECH FZCO
 paotech.co

Hand-hole 60

General Specifications

Hand-hole 60 (Body + Cover)

Item	Value	Unit
Top Outer Diameter	620	mm
Bottom Outer Diameter	618	mm
Top Inner Diameter	600	mm
Bottom Inner Diameter	588	mm
Door Seat Inner Diameter	570	mm
Hand-hole Body Thickness	15	mm
Hand-hole Body Top Thickness	10	mm

Hand-hole 60
(Body + Cover)



Hand-hole
Body Bottom Thickness

15

mm

Hand-hole
Height

550

mm

Cover
Diameter

600

mm

Cover
Thickness

32

mm

Cover
Height

70

mm

Cover
Weight

23.8±0.2

Kg

Hand-hole
Weight

25.5±0.2

Kg

Hand-hole 60 (Body + Cover)

**Total
Weight**

49.3±0.3 **Kg**

Material

GFRP ---

**Cover
Standard**

**BS EN
124** ---

**Body
Standard**

**BS EN
15383** ---

**Cover
Production-Method**

BMC ---

**Body
Production-Method**

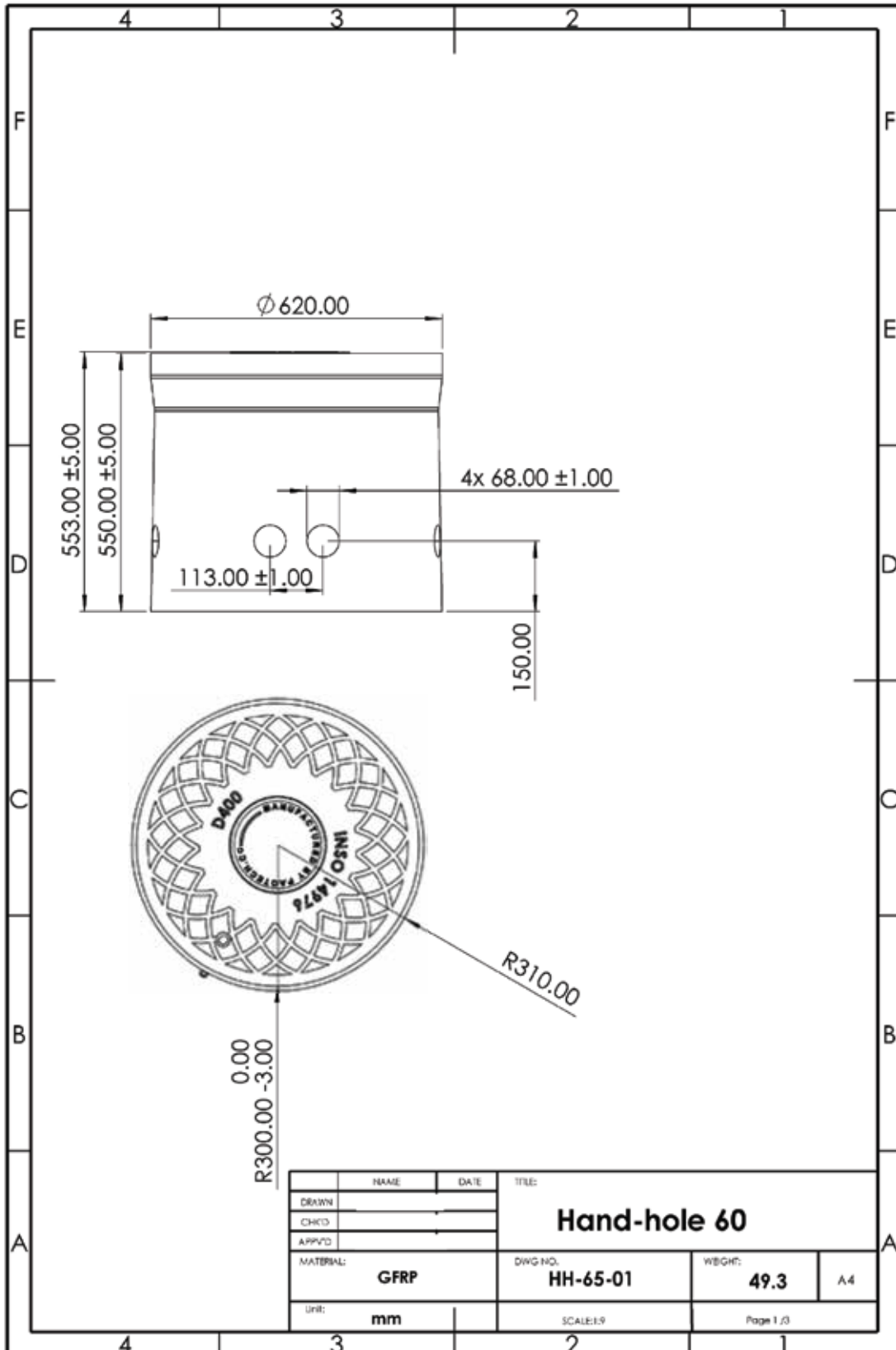
**Filament
Winding** ---

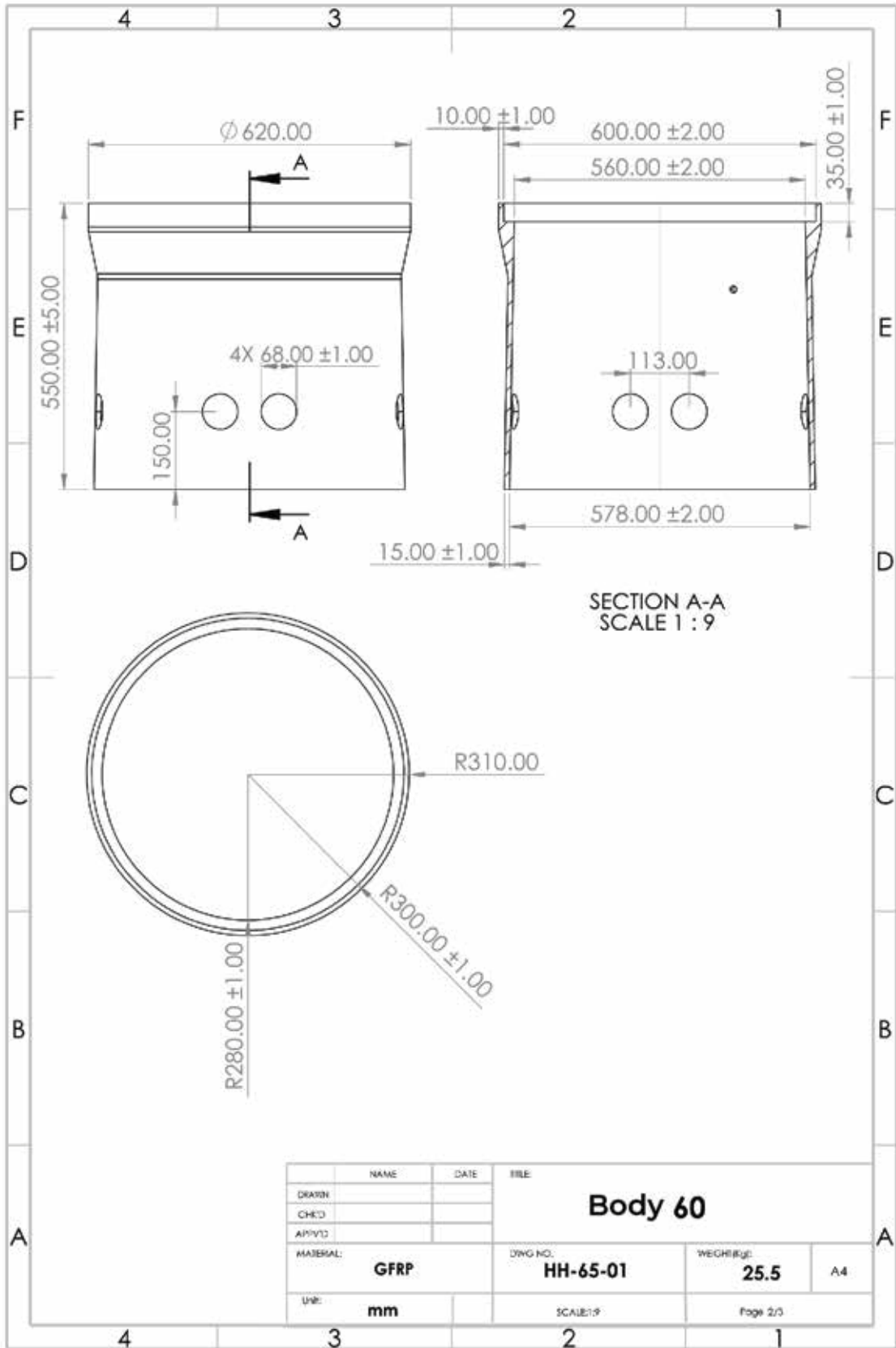
Grade

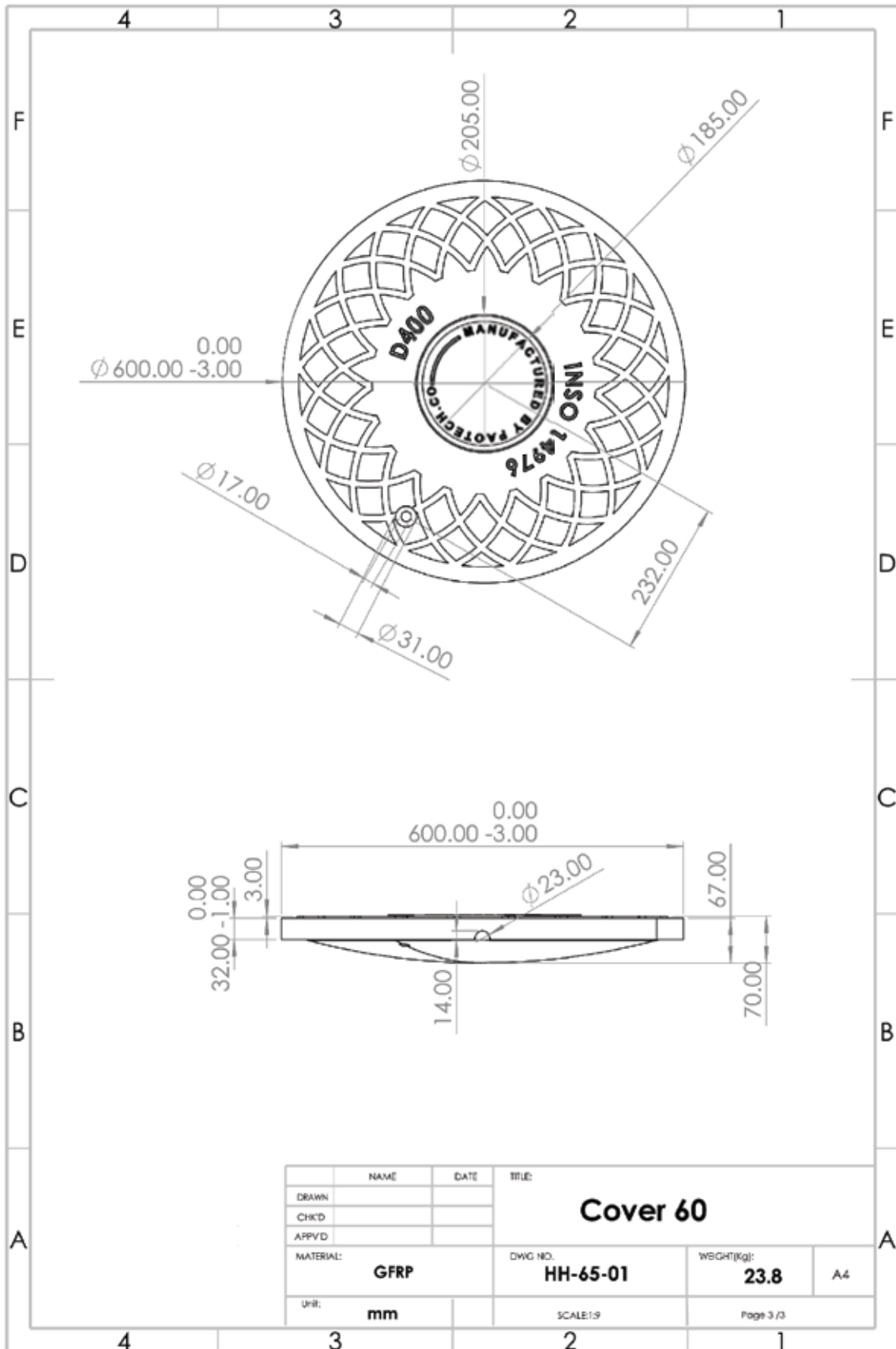
D400 ---

PAO
PAOTECH FZCO









PA

PAOTECH FZCO



PA

PAOTECH FZCO



Info@paotech.co



paotech.co

