





PA 
PAOTECH FZCO
 paotech.co

Hand-hole 32

General Specifications

Hand-hole 32 (Body + Cover)

Item	Value	Unit
Top Outer Diameter	344	mm
Bottom Outer Diameter	328	mm
Top Inner Diameter	324	mm
Bottom Inner Diameter	308	mm
Door Seat Inner Diameter	290	mm
Hand-hole Body Thickness	10	mm
Hand-hole Body Top Thickness	10	mm

Hand-hole 32
(Body + cover)



Hand-hole
Body Bottom Thickness

10

mm

Hand-hole
Height

550

mm

Cover
Diameter

320

mm

Cover
Thickness

32

mm

Cover
Height

70

mm

Cover
Weight

6.3±0.1

Kg

Hand-hole
Weight

12.9±0.2

Kg

Hand-hole 32 (Body + Cover)

**Total
Weight**

19.2±0.2

Kg

Material

GFRP

**Cover
Standard**

**BS EN
124**

**Body
Standard**

**BS EN
15383**

**Cover
Production-Method**

BMC

**Body
Production-Method**

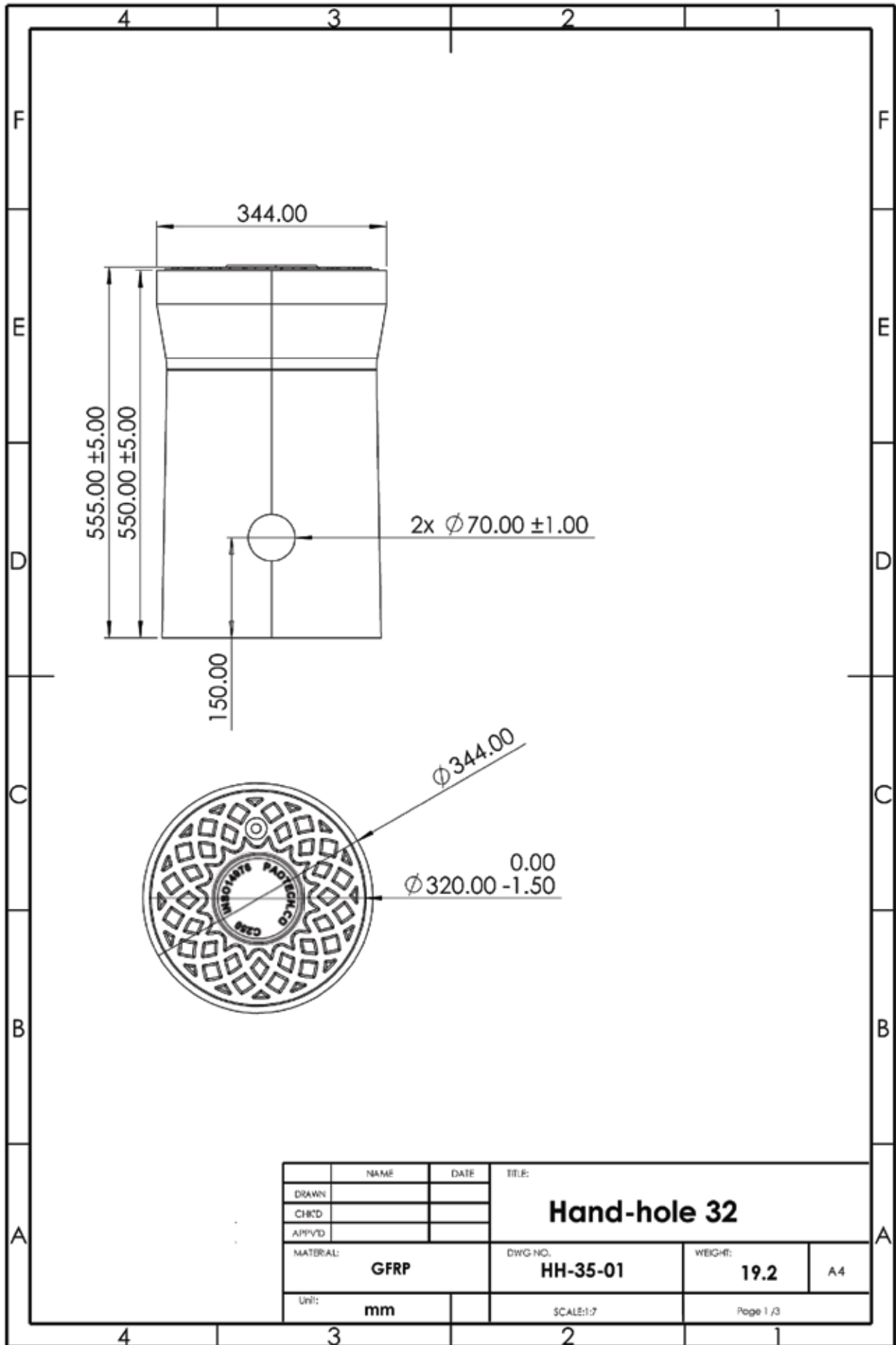
**Filament
Winding**

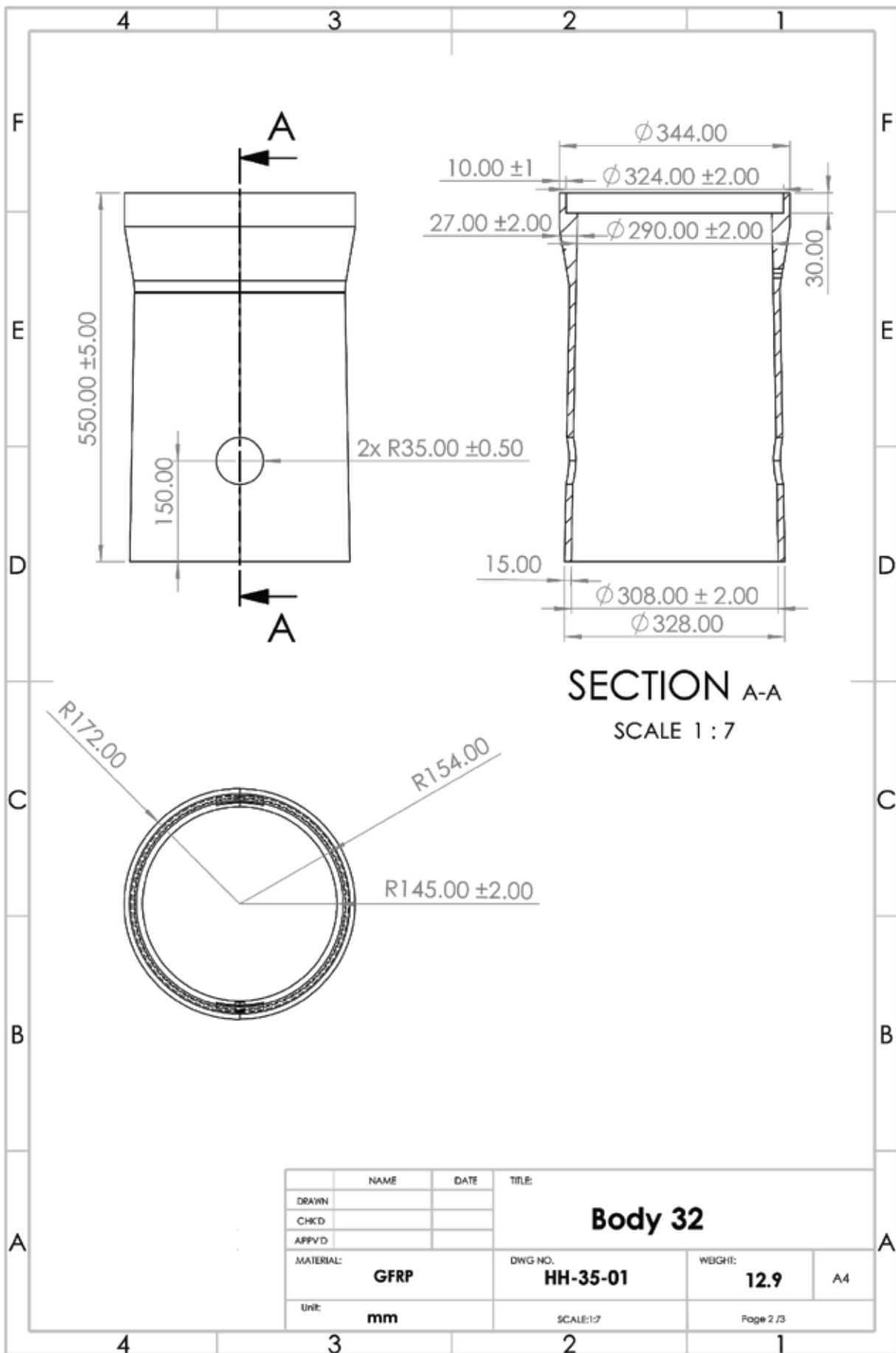
Grade

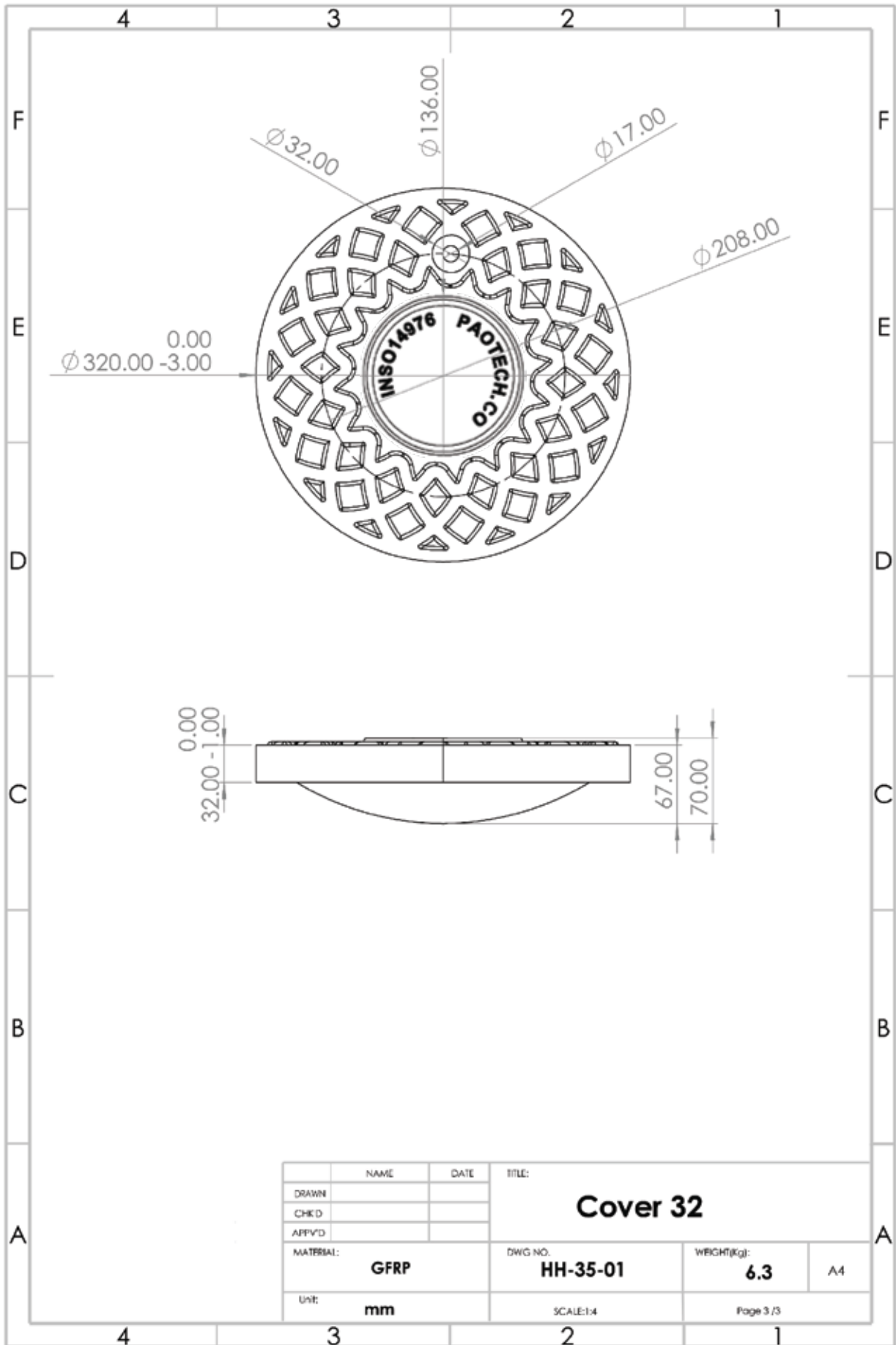
D400

The image features a dark, futuristic background with a large, glowing circular portal in the center. The portal has a complex, grid-like pattern on its surface. In the foreground, three white, cylindrical objects are arranged in a triangular pattern. Each cylinder has a black, textured top surface with a circular logo in the center. The cylinders have a ribbed texture and a small circular hole near the bottom. The overall aesthetic is high-tech and industrial.

PAOTECH FZCO









PAOTECH FZCO



PA

PAOTECH FZCO



Info@paotech.co



paotech.co

